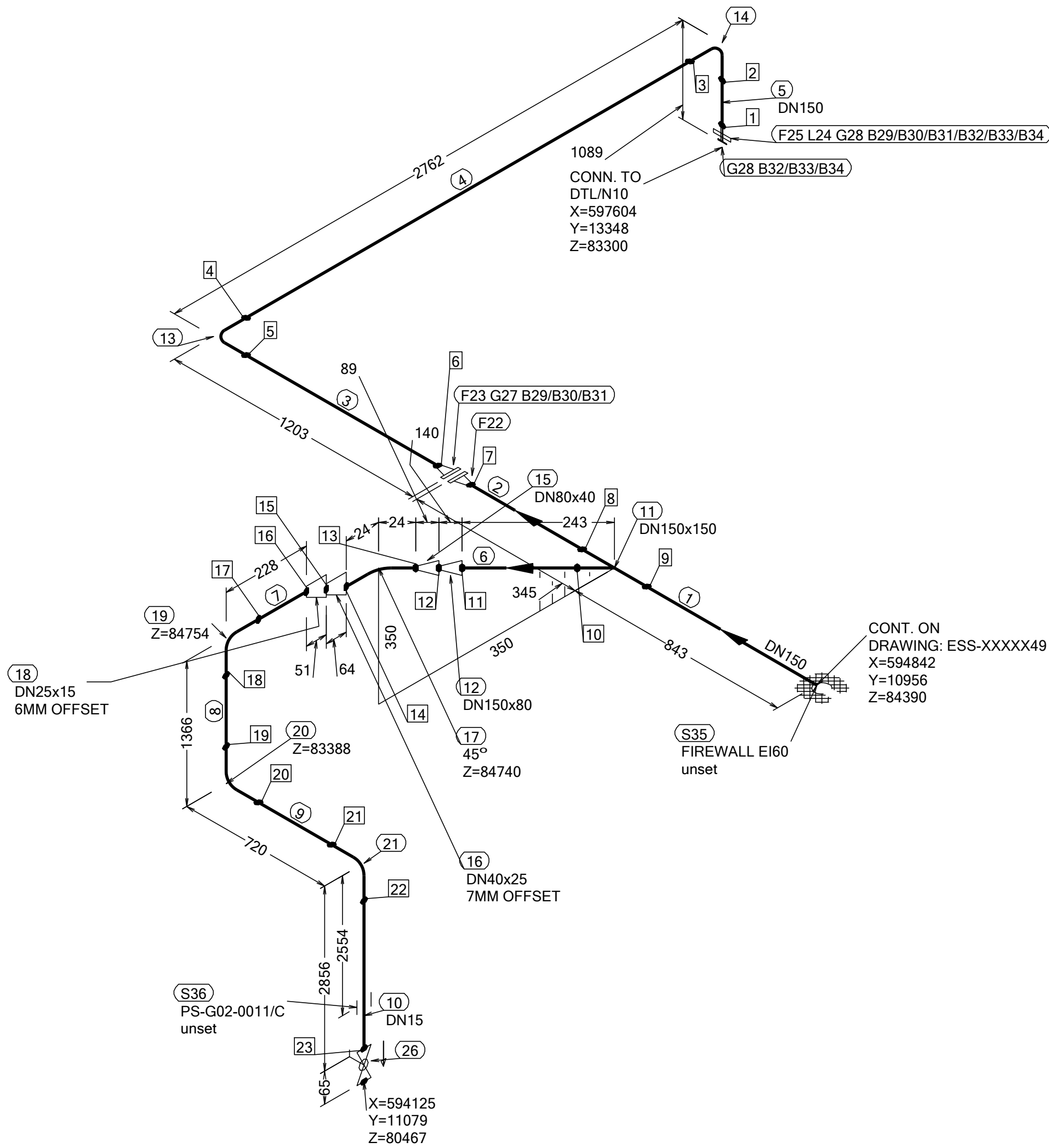
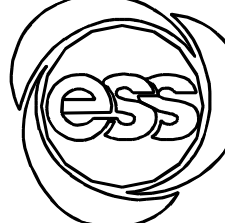


N (Y)



WELD	WPS	FABRICATION MATERIALS					
		PT NO	COMPONENT DESCRIPTION	DN	MATERIAL	QTY (mm)	REMARKS
1			PIPE				
2		1	PIPE, SS-EN 10217-7, TC1, 168.3x2.0	150	EN 1.4404	700	
3		2	PIPE, SS-EN 10217-7, TC1, 168.3x2.0	150	EN 1.4404	147	
4		3	PIPE, SS-EN 10217-7, TC1, 168.3x2.0	150	EN 1.4404	919	
5		4	PIPE, SS-EN 10217-7, TC1, 168.3x2.0	150	EN 1.4404	2304	
6		5	PIPE, SS-EN 10217-7, TC1, 168.3x2.0	150	EN 1.4404	805	
7		6	PIPE, SS-EN 10217-7, TC1, 168.3x2.0	150	EN 1.4404	100	
8		7	PIPE, SS-EN 10217-7, TC1, 21.3x2.0	15	EN 1.4404	200	
9		8	PIPE, SS-EN 10217-7, TC1, 21.3x2.0	15	EN 1.4404	1310	
10		9	PIPE, SS-EN 10217-7, TC1, 21.3x2.0	15	EN 1.4404	664	
11		10	PIPE, SS-EN 10217-7, TC1, 21.3x2.0	15	EN 1.4404	2828	
12			FITTINGS				
13		11	TEE EQUAL, SS-EN 10253-4, TYPE A, 168.3x2.0 / 168.3x2.0	150 x 150	EN 1.4404	1	
14		12	REDUCER CONC, SS-EN 10253-4, TABLE A.5, 168.3x2.0 / 88.9x2.0	150 x 80	EN 1.4404	1	
15		13	ELBOW 90, TYPE 3D, SS-EN 10253-4, TYPE A, 168.3x2.0	150	EN 1.4404	1	
16		14	ELBOW 90, TYPE 3D, SS-EN 10253-4, TYPE A, 168.3x2.0	150	EN 1.4404	1	
17		15	REDUCER CONC, SS-EN 10253-4, TABLE A.5, 88.9x2.0 / 48.3x2.0	80 x 40	EN 1.4404	1	
18		16	REDUCER ECC, SS-EN 10253-4, TABLE A.5, 48.3x2.0 / 33.7x2.0	40 x 25	EN 1.4404	1	
19		17	ELBOW 45, TYPE 3D, SS-EN 10253-4, TYPE A, 48.3x2.0	40	EN 1.4404	1	
20		18	REDUCER ECC, SS-EN 10253-4, TABLE A.5, 33.7x2.0 / 21.3x2.0	25 x 15	EN 1.4404	1	
21		19	ELBOW 90, TYPE 3D, SS-EN 10253-4, TYPE A, 21.3x2.0	15	EN 1.4404	1	
22		20	ELBOW 90, TYPE 3D, SS-EN 10253-4, TYPE A, 21.3x2.0	15	EN 1.4404	1	
23		21	ELBOW 90, TYPE 3D, SS-EN 10253-4, TYPE A, 21.3x2.0	15	EN 1.4404	1	
			FLANGES				
		22	FLANGE WN, SS-EN 1092-1, TYPE 11, PN16	150		1	
		23	FLANGE WN, SS-EN 1092-1, TYPE 11, PN16	150		1	
		24	WELDING RING WITH COLLAR, SS-EN 1092-1 TYPE 35, PN16	150		1	
		25	LOOSE FLANGE, SS-EN 1092-1, TYP 02, PN16	150		1	
			VALVES / IN-LINE ITEMS				
		26	BALL VALVE, WORCESTER A44, SHORT, BW	15		1	

PT NO	COMPONENT DESCRIPTION	DN	MATERIAL	QTY (mm)	REMARKS
27	GASKET, EN 1514-1, TYPE XXX, T=1,5mm	150	EXPANDED GRAPHITE	1	
28	GASKET, EN 1514-1, TYPE XXX, T=1,5mm	150	EXPANDED GRAPHITE	1	
29	HEXAGONAL NUT, M6M, ISO 4032	20	EN 1515-4, A4, HV≥250	16	
30	WASHER, BRB, ISO 7089	20	EN 1515-4, A4-70	32	
31	80 mm HEXAGONAL BOLT, M6S, ISO 4017	20	EN 1515-4, A4, HV≥250	16	
32	HEXAGONAL NUT, M6M, ISO 4032	20	EN 1515-4, A4, HV≥250	8	
33	WASHER, BRB, ISO 7089	20	EN 1515-4, A4, HV≥250	16	
34	90 mm HEXAGONAL BOLT, M6S, ISO 4017	20	EN 1515-4, A4-70	8	
35	PENETRATION ATTA	150		1	
36	ESS Atta	15		1	

WPS See Weldlist	Design Temperature	Tightening Torque For Flange Joints	P&ID Drawing Number	General Layout Drawing Number	Calculation Report	Inspection Plan	Area Code
TBN	50degC	TBN	ESS-0060416	TBN	ESS-0058702	TBN	G02
Quality Level For Weldign Acc To	Design Pressure	Bend Radius	Bending Procedure	Coupling Installation Procedure	Pressure Test Program	Alternate System Tag	Date (First Issue)
TBN	10bar (g)	N/A	N/A	TBN	TBN		170522
Weld Joint Efficiency Factor (Longitudinal)	Test Pressure	Insulation Specification		Title/Name EUROPEAN SPALLATION SOURCE ERIC WATER COOLING SYSTEM CWM DIW SUPPLY FOR FEB ESS.ACC.E02.E04.WP0008		Scale	
1,0	14.3bar (g)	N/A				-	
Elevation (z) Acc To	Quality Class	Insulation Thickness				Format	
BCS	MQC4-C	N/A				A2	
	Media	Allowance For Corrosion			Sheet		1 of 1
	CWM	0			Document Number		ESS-XXXXX23
	Pipe Specification	Surface Treatment			Revision		A1
	MQC4-W-PN16	N/A					

Rev	Description	Date	Drawn	Designed	Reviewed	Verified	Quality	Approved
A1	ISSUED FOR CDR	170522	FRPE	FRPE	AKCO	ANLU		